

# AQUALAND™

PUMPS & MOTORS

## PRODUCT CATALOGUE

*Trusted for Values...*



✉ : [info@pioneerpumps.in](mailto:info@pioneerpumps.in)

🌐 : [www.pioneerpumps.in](http://www.pioneerpumps.in)

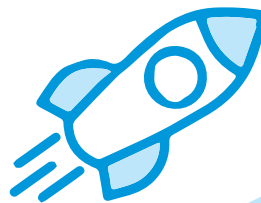
📘 : [facebook.com/AqualandPumps](https://facebook.com/AqualandPumps)

📷 : [instagram.com/aqualandpumps](https://instagram.com/aqualandpumps)

Toll Free No : 1800 - 123 - 4733

## MISSION

- To attain a high level customer satisfaction through a superior Quality of Service
- To empower the workforce to offer products and services that exceeds customer expectations
- Training resources to provide excellent value for money products in the industry



## VISION

“ To become a customer centric company that specializes in manufacturing & providing most reliable, durable and robust pumping solutions to clients in global wide markets.



## INDEX

Self Priming Pumps	01 - 02
Suction Pumps	03
Shallow Well Jet Pumps	04
Centrifugal - Jet Pumps ( Twin & MST Type )	05
Centrifugal Monoblock Pumps - Standard	06
Centrifugal Monoblock Pumps - Smart Series	07
Open Well Submersible Pumps - 1Ø, 3Ø Horizontal	08 - 10
Open Well Submersible Pumps - Vertical	11 - 13
Open Well Submersible Pumps - Vertical (1Ø)	14
3" Submersible Pumps	15
4" Submersible Pumps	16 - 19
6" Submersible Pumps	20 - 23
6" Submersible Pumps - 50 Feet	24 - 26
Waste Water Submersible Pumps	27
Pressure Booster Pumps & Automatic Pressure Controller	28 - 29
Air Compressor - Borewell / Tank	30
Induction Motor	31
Control Panels	32
Peripheral Pumps - NSP	33
Centrifugal Monoblock Pump - EXP	34
Cable Selection Chart	35 - 36
Pipe Friction Loss Chart	37





### Technical Specification

Power	: 0.37 kW
Speed	: 2800 rpm
Head	: Upto 42 m
Flow	: Upto 3500 lph
Voltage Range	: 160 - 240V, 1Ph 50 Hz
Liquid / Max.Temp	: Clear Water / 33°C
Insulation	: Class B, 99.9 % Pure Copper

### Applications



Residential



Garden



Cooling System

### Features

- Inbuilt with TOP
- Compact in Size
- Designed wide voltage operation
- Easy to Install
- Brass Impeller

### Performance Chart

Model	kW / HP	Pipe Size (mm)	Total Head in Meters												Shut-off Head (m)	
			6	9	12	15	18	21	24	27	30	33	36	39		
			Discharge in lph													
VARSHA - 50	0.37 / 0.5	25 X 25	1850	1600	1330	1080	800	700	500							28
AQUA TINY - 050	0.37 / 0.5	25 X 25	1850	1600	1330	1080	820	720	520							28
VARSHA - 051	0.37 / 0.5	25 X 25	1800	1550	1250	1050	900	750	450							28
ELITE	0.37 / 0.5	25 X 25	2000	1750	1550	1200	1000	750	500							29
MINI STAR - 051	0.37 / 0.5	25 X 25	2100	1950	1700	1500	1250	1000	750	475						32
AQUA STAR - 051	0.37 / 0.5	25 X 25	2200	1950	1770	1370	1270	1150	100	850						32
AQUA MAX - 50*	0.37 / 0.5	25 X 25	2200	1950	1770	1370	1270	1150	100	850						32
SPORTY - SP	0.37 / 0.5	25 X 25	2400	2100	2000	1900	1750	1500	1350	1050	850	500	350			40
HI - FLO	0.37 / 0.5	25 X 25	3100	2850	2600	2350	200	1800	1650	1450	1080	750	300			41
AQUA MASTER - II	0.37 / 0.5	25 X 25	2500	2250	2100	1900	1670	1450	1350	1150	1100	780	550			42
MAXIMA - 050	0.37 / 0.5	25 X 25	3500	2900	2700	2350	200	1600	1050							30

★ Available in Casting Body





Technical Specification	
Power Range	: 0.75 kW - 1.1kW
Speed	: 2800 rpm
Head	: Upto 66 m
Flow	: Upto 4000 lph
Voltage Range	: 160 - 240V, 1Ph 50 Hz
Liquid / Max.Temp	: Clear Water / 33°C
Insulation	: Class B, 99.9 % Pure Copper

## Applications



Residential



Garden



Cooling System



Booster

## Features

- Inbuilt with TOP
- Compact in Size
- Designed wide voltage operation
- Easy to Install
- Brass Impeller

## Performance Chart

Model	kW / HP	Pipe Size (mm)	Total Head in Meters												Shut-off Head (m)
			6	12	18	24	30	36	42	48	54	60			
			Discharge in lph												
VARSHA 100	0.75 / 1.0	25 X 25	2520	2160	1700	1300	900	450							42
MAXI FLOW	0.83 / 1.1	25 X 25	2550	2050	1620	1224	720	350							42
AQUA STAR - 100	0.75 / 1.0	25 X 25	3600	2900	2700	2200	1700	1200	360						44
AQUA MAX - 100*	0.75 / 1.0	25 X 25	3600	2900	2700	2200	1700	1200	360						44
AQUA STAR - 101	0.75 / 1.0	25 X 25	3100	2600	2050	1670	1300	850	700						48
FORCE 100	0.75 / 1.0	25 X 25	3300	2850	2700	2500	2100	1700	1200	700					53
AQUA MASTER - I	0.75 / 1.0	25 X 25	3950	3100	3000	2900	2400	2050	1650	1200	650				60
AQUA MASTER PLUS	1.10 / 1.5	25 X 25	4000	3300	3100	2900	2600	2350	1900	1500	1300	1000			66

★ Available in Casting Body



### Technical Specification

Power Range	: 0.37 kW - 0.75 kW
Speed	: 2880 rpm
Head	: Upto 42 m
Flow	: Upto 3600 lph
Voltage Range	: 160 - 240 V 1Ph, 50 Hz
Liquid / Max.Temp	: Clear Water / 33°C
Insulation	: Class B, 99.9 % Copper

### Applications



Residential



Garden



Water Supply

### Features

- Inbuilt with TOP
- Highly wear resistant brass impeller
- High operating efficiency
- Good suction lift

### Performance Chart

Model	kW/HP	Pipe Size (mm)	Total Head in Meters												Shut-off Head (m)
			6	9	12	15	18	21	24	27	30	33	36	39	
			Discharge in lph												
AQUA MAGIC - 051	0.37 / 0.5	25 X 25	1500	1350	1150	970	750	580	300						28
AQUA MAGIC - 101	0.75 / 1.0	25 X 25	2250	2100	1850	1600	1400	1150	950	700	500	250			38
AQUA SPEED - 050	0.37 / 0.5	25 X 25	2500	2350	2050	1800	1600	1400	1050	650	300				35
AQUA SPEED - 051	0.37 / 0.5	25 X 25	2600	2500	2250	2000	1800	1550	1280	1050	850	400			38
AMS - I	0.37 / 0.5	25 X 25	2700	2650	2550	2300	2050	1100	500						28
AMS - II	0.75 / 1.0	25 X 25	3600	3400	3100	2700	2450	2250	2000	1500	1400	1200	1000	400	42



Technical Specification	
Power Range	: 0.37 kW - 0.75 kW
Speed	: 2880 rpm
Head	: Upto 40 m
Flow	: Upto 2900 lph
Voltage Range	: 160 - 240 V 1Ph, 50 Hz
Liquid / Max.Temp	: Clear Water / 33°C
Insulation	: Class B, 99.9 % Pure Copper

## Applications



Residential



Garden



Sprinklar



Booster

## Features

- Inbuilt with TOP
- Good Suction Lift
- High operating efficiency
- Designed for shallow well application

## Performance Chart

Model	kW/HP	Pipe Size (mm)	Total Head in Meters											Shut-off Head (m)	
			6	9	12	15	18	21	24	27	30	33	36		39
			Discharge in lph												
ASW - 05	0.37 / 0.5	25 X 25	2700	2650	2580	2500	2400	2200	1500	680	300				32
ASW - 05 SS	0.37 / 0.5	25 X 25	2700	2650	2580	2500	2400	2200	1500	680	300				32
ASW - 10	0.75 / 1.0	25 X 25	2900	2750	2700	2650	2600	2500	2400	200	1500	1100	750		40





### Technical Specification

Power	: 0.75 kW
Speed	: 2880 rpm
Head	: Upto 80 m
Flow	: Upto 1350 lph
Voltage Range	: 160 - 240 V 1Ph, 50 Hz
Liquid / Max.Temp	: Clear Water / 33°C
Insulation	: Class B, 99.9 % Copper

### Features

- Inbuilt with TOP • Good Suction Lift
- High operating efficiency
- Pumpset (Twin Type) can be Installed in horizontal & Vertical Position

### Applications



Residential



Garden

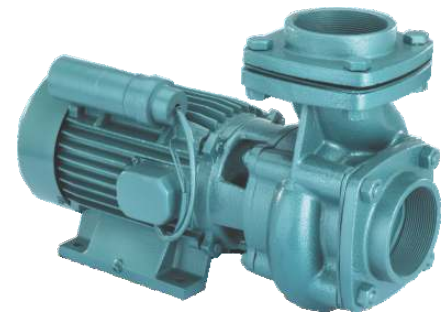


Water Supply

### Performance Chart

Model	kW/HP	Pipe Size (mm)	Total Head in Meters							Shut-off Head (m)
			8	12	16	20	24	28	32	
			Discharge in lph							
AJC - 100 R	0.75 / 1.0	32X25X25	1350	1300	1250	1100	800	550	350	40

Model	kW/HP	Pipe Size (mm)	Total Head in Meters										Shut-off Head (m)
			10	20	25	30	35	40	45	50	55	60	
			Discharge in lph										
AJCM - 102	0.75 / 1.0	32X25X25	800	785	780	750	740	700	600	500	360	290	80



### Technical Specification

Power Range	: 0.37 kW - 2.2 kW
Speed	: 2880 rpm
Head	: Upto 34m
Flow	: Upto 800 lpm
Voltage Range	: 160 - 240V, 1Ph 50 Hz
Liquid / Max.Temp	: Clear Water / 33°C
Insulation	: Class B, 99.9 % Pure Copper

## Features

- Wide voltage operation
- Inbuilt with TOP
- Compact in Size
- Back pullout design
- Rigid Construction
- Dynamically balanced rotating parts

## Applications



Residential



Garden



Industries



Irrigation

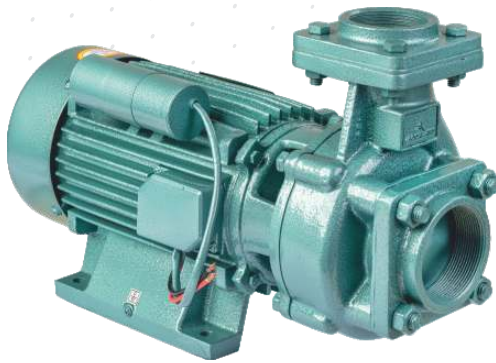


Sprinkler

## Performance Chart

Model	kW / HP	Pipe Size (mm)	Total Head in Meters														Shut-off Head (m)	
			6	8	10	11	12	14	16	18	20	22	24	26	28	30		32
			Discharge in lpm															
ACM-0522	0.37 / 0.5	25 X 25				110	103	87	66	34								20
ACM-0522H	0.37 / 0.5	25 X 25					126	120	100	85	61	10						23
ACM-0544	0.37 / 0.5	40 X 40	250	240	180	145	100											13
ACM-0544H	0.37 / 0.5	40 X 40		250	220	180	115	115										15
ACM-0555	0.37 / 0.5	50 X 50	260	245	200	160												12
ACM-1022	0.75 / 1.0	25 X 25		145	140	120	115	110	105	100	95	88	80	50	25			30
ACM-1032	0.75 / 1.0	32 X 25		145	143	122	116	111	106	101	96	90	85	45				28
ACM-1044 *	0.75 / 1.0	32 X 25			290	270	260	250	200	154	90							22
ACM-1054 *	0.75 / 1.0	50 X 40	450	400	340	290	240	200										16
ACM-1055 *	0.75 / 1.0	50 X 50	440	425	350	300	250											13
ACM-1088 *	0.75 / 1.0	80 X 80	720-5m	668-6m	522-7m	344-8m												9
ACM-1555 *	1.1 / 1.5	50 X 50		465	450	420	390	250	180									19
ACM-1565 *	1.1 / 1.5	65 X 50		465	450	430	400	250	150									19
ACM-2054 *	1.5 / 2.0	50 X 40		292	280	270	260	250	240	230	220	210	190	170	140			30
ACM-2055 *	1.5 / 2.0	50 X 50			515	510	500	460	400	380	320							21
ACM-2065 *	1.5 / 2.0	65 X 50			520	515	510	465	405	385	310							21
ACM-2086 *	1.5 / 2.0	80 X 65	700	680	620	580	520	560										16
ACM-2088 *	1.5 / 2.0	80 X 80	800	750	700	600	500											13
ACM-3055 *	2.2 / 3.0	50 X 50	512	480	475		470	460	450	440	430	420	410	400	360	300	240	34
ACM-3065 *	2.2 / 3.0	65 X 50	530	480	470		460	450	440	440	435	430	425	400	300			30

\* Available in Spl Models



## Features

- Wide voltage operation
- Inbuilt with TOP
- Compact in Size
- Back pullout design
- Rigid Construction
- Dynamically balanced rotating parts

## Technical Specification

Power Range	: 0.37 kW - 1.5 kW
Speed	: 2880 rpm
Head	: Upto 21m
Flow	: Upto 800 lpm
Voltage Range	: 160 - 240V, 1Ph 50 Hz
Liquid / Max.Temp	: Clear Water / 33°C
Insulation	: Class B, 99.9 % Pure Copper

## Applications



Residential



Garden



Industries



Irrigation



Sprinklar

## Performance Chart

Model	kW / HP	Pipe Size (mm)	Total Head in Meters														Shut-off Head (m)	
			6	8	10	11	12	14	16	18	20	22	24	26	28	30		32
			Discharge in lpm															
ACM-SMT-2055	1.5 / 2.0	50 X 50			520	510	500	450	400	330	230							21
ACM-SMT-2065	1.5 / 2.0	65 X 50			525	515	505	455	405	335	230							21
ACM-SMT-2086	1.5 / 2.0	80 X 65	700	680	600	550	500	480										16
ACM-SMT-2088	1.5 / 2.0	80 X 80	800	750	600	550	400											13
ACM-SMT-2055S	1.5 / 2.0	50 X 50			520	510	500	450	400	330	230							21
ACM-SMT-2065S	1.5 / 2.0	65 X 50			525	515	505	455	405	335	230							21
ACM-SMT-2086S	1.5 / 2.0	80 X 65	700	680	600	550	500	480										16
ACM-SMT-2088S	1.5 / 2.0	80 X 80	800	750	600	550	400											13





## Technical Specification

Power Range	: 0.37 kW - 2.2 kW ( Single Phase )
Speed	: 2880 rpm
Head	: Upto 34 m
Flow	: Upto 650 lpm
Voltage Range	: 160 - 240V 1Ph, 50 Hz
Liquid / Max.Temp	: Clear Water / 33°C
Motor Detail	: Wet Type, Cat - B, Duty - S1

## Features

- High Discharge
- No Suction & Priming Problem
- Water lubricated bearings
- Stainless Steel Impeller & Motor Body
- Rigid Construction

## Applications



Residential



Garden



Sprinklar



Irrigation



Water Supply



Industries

## Performance Chart

MODEL	POWER RATING		OUTLET mm	CONN	HEAD IN M	4	8	12	16	20	24	26	28	32	36	40	44	
	kW	HP				HEAD IN F	13	26	39	52	66	79	85	92	105	118	131	144
AOS-05E	0.37	0.5	25x25	CSR	Discharge in LPM	132	110	90	50	20	22m-0							
AOS-05	0.37	0.5	25x25	CSR		155	145	127	105	80	24m-0							
GANGA I	0.37	0.5	25x25	CSR		140	128	101	60	19m-0								
AOS-10E	0.75	1.0	32x25	CSR		165	155	145	130	95	35	25	29m-0					
AOS-10	0.75	1.0	32x25	CSR		170	160	150	140	125	110	100	90	34m-0				
AOS 10 SMT	0.75	1.0	32x25	CSR		160	140	130	120	105	90	48	29m-0					
GANGA II	0.75	1.0	32x25	CSR		175	163	155	142	116	95	65	45	32m-0				
AOS 2050 CI	1.50	2.0	65X50	CSR		450	425	380	300	260	90	25m - 0						
AOS 2050 S	1.50	2.0	65X50	CSR		450	425	380	300	260	90	25m - 0						
AOS 3050 CI	2.20	3.0	65X50	CSR		630	600	590	540	480	440	310	29- 0					
AOS 3050 S	2.20	3.0	65X50	CSR		630	600	590	540	480	440	310	29- 0					



**Technical Specification**

Power Range	: 2.2 kW - 3.7 kW ( Three Phase )
Speed	: 2880 rpm
Head	: Upto 44 m
Flow	: Upto 900 lpm
Voltage Range	: 380 - 415 V 3Ph, 50 Hz
Liquid / Opr.Temp	: Clear Water / 33°C
Motor Detail	: Wet Type, Cat - B, Duty - S1

**Features**

- High Discharge
- No Suction & Priming Problem
- Water Lubricated bearings
- Working in Low Voltage
- Rigid Construction



**Applications**



Residential



Garden



Sprinklar



Irrigation



Water Supply



Chemical Industries

**Performance Chart**

MODEL	POWER RATING		OUTLET mm	CONN	HEAD IN M HEAD IN F	4	8	12	16	20	24	26	28	32	36	40	44
	kW	HP				13	26	39	52	66	79	85	92	105	118	131	144
AOS 3050 E	2.20	3.0	65X50	DOL	Discharge in LPM	630	600	590	540	480	440	310	29 - 0				
AOS 3065 E	2.20	3.0	75X65	DOL		850	760	700	620	480	330	25M-0					
AOS-5050E	3.70	5.0	65X50	DOL		910	880	820	680	590	480	420	300	30m - 0			
AOS-5050 HE	3.70	5.0	65X50	DOL		780	760	720	700	680	640	570	510	468	340	270	0



### Technical Specification

Power Range	: 2.2 kW - 7.5 kW ( Three Phase )
Speed	: 2880 rpm
Head	: Upto 60 m
Flow	: Upto 1500 lpm
Voltage Range	: 380 - 415 V 3Ph, 50 Hz
Liquid / Opr.Temp	: Clear Water / 33°C
Motor Detail	: Wet Type, Cat - B, Duty - S1

## Features

- High Discharge
- No Suction & Priming Problem
- Water lubricated bearings
- Working in Low Voltage
- Rigid Construction



## Applications



Residential



Garden



Sprinklar



Irrigation



Water Supply



Chemical Industries

## Performance Chart

MODEL	POWER RATING		OUTLET mm	CONN	HEAD IN M HEAD IN F	4	8	12	16	20	24	26	28	32	36	40	44
	kW	HP				13	26	39	52	66	79	85	92	105	118	131	144
AOS 3050	2.20	3.0	65X50	DOL	Discharge in LPM	640	610	590	540	480	440	310	28m - 0				
AOS 3065	2.20	3.0	75X65	DOL		860	770	700	620	480	330	25m-0					
AOS-5050 H	3.70	5.0	65X50	DOL&S/D		780	760	720	700	680	640	570	510	468	340	270	42m-0
AOS 5050	3.70	5.0	65X50	DOL&S/D		910	880	820	680	590	480	420	300	30m - 0			
AOS 5065	3.70	5.0	75X65	DOL&S/D		920	880	820	680	590	480	420	300	30m - 0			
AOS 5075	3.70	5.0	100X75	DOL&S/D		1620	1320	1050	750	300	22m - 90	23m - 0					
AOS 7565	5.50	7.5	75X65	DOL&S/D		1080	1010	920	840	750	675	620	560	450	35M-0		

MODEL	POWER RATING		OUTLET mm	CONN	HEAD IN M HEAD IN F	18	22	26	30	34	38	42	46	50	54	58	62
	kW	HP				59	72	85	98	111	125	138	150	164	177	190	203
AOS 7550 H	5.50	7.5	65X50	DOL&S/D	Discharge in LPM	850	790	750	700	670	600	580	450	350	300	200	0





## Technical Specification

Power Range	: 2.2 kW - 11 kW
Speed	: 2880 rpm
Head	: Upto 140 m
Flow	: Upto 2500 lpm
Voltage Range	: 380 - 415 V 3Ph, 50 Hz
Liquid / Opr.Temp	: Clear Water / 33°C
Motor Detail	: Wet Type, Cat - B, Duty - S1

## Features

- Copper Rotor
- Dynamically Balanced Rotating Parts
- High Discharge
- Water Lubricated bearings
- Special Design for wide voltage Operation

## Applications



High rise  
Buildings



Sprinklar



Irrigation



Water Supply

## Performance Chart

Model	kW	HP	Stage	Pipe Size	Head		0	5	10	15	20	25	30	35	40	45	50	55	60	65	70	75	80	85	
					Head in mts	Head in feet																			
AOSV-5026	3.7	5.00	2	65	780	741	720	660	600	497	246	47M-0	147	164	180	197	213	229	246	262	279				
AOSV-5035	3.7	5.00	3	50	720	672	660	630	600	564	528	468	408	350	300	246	177	177	177	177	177	177	177	177	177
AOSV-5045	3.7	5.00	4	50	740	710	740	665	645	622	600	576	550	530	437	437	437	437	437	437	437	437	437	437	437

**Performance Chart**

Model	kW	HP	Stage	Pipe Size	Head in		Discharge in LPM																
					mtrs	feet	0	5	10	15	20	25	30	35	40	45	50	55	60	65	70	75	80
AOSV-7526	5.5	7.50	2	65	990	960	942	889	814	750	663	580	477	238	49M-0	180	197	213	229	246	262	279	
AOSV-7536	5.5	7.50	3	65	980	975	942	906	852	801	750	696	643	592	529	450	342	67M-0					
AOSV-7545	5.5	7.50	4	50	765	758	745	732	707	685	665	645	608	590	570	545	500	474	410	301	190	84M-0	

Model	kW	HP	Stage	Pipe Size	Head in		Discharge in LPM																
					mtrs	feet	0	20	40	60	70	75	80	85	90	95	100	110	120				
AOSV-7555	5.5	7.50	5	50	740	720	700	650	600	610	455	410	310	200	100M-0	361	394						
AOSV-7565	5.5	7.50	5	50	610	598	563	504	470	390	335	310	270	255	220	130	120M-0						

Model	kW	HP	Stage	Pipe Size	Head in		Discharge in LPM																
					mtrs	feet	0	5	10	15	20	25	30	35	40	45	50	55	60	65	70	75	85
AOSV-10026	7.5	10.00	2	65	1548	1540	1490	1370	1250	1210	1170	1015	920	710	473	54M-0	180	197	213	229	246	279	328
AOSV-10036	7.5	10.00	3	65	1020	1010	995	972	955	910	890	855	803	736	700	670	620	575	405	78M-0			
AOSV-10046	7.5	10.00	4	65	910	905	890	878	865	840	824	812	800	790	765	690	635	600	486	397	206	94M-0	
AOSV-10055	7.5	10.00	5	50	780	774	695	668	600	574	556	535	510	492	470	485	498	510	486	450	360	104M-0	
AOSV-10065	7.5	10.00	6	50	810	807	795	780	765	742	728	708	699	686	680	642	628	610	525	485	407	120M-0	

Model	kW	HP	Stage	Pipe Size	Head in		Discharge in LPM																
					mtrs	feet	0	25	30	35	40	45	50	55	60	65	70	75	80	85	90	95	100
AOSV-12528	9.3	12.50	2	80	1746	1426	1316	1260	1185	908	55M-0	180	197	213	229	246	262	279	295	312	328	344	
AOSV-12538	9.3	12.50	3	80	1486	1276	1028	1007	922	886	810	690	546	510	412	75M-0							
AOSV-12546	9.3	12.50	4	65	1186	1105	938	901	840	807	780	763	730	701	648	597	547	410	347	208	103M-0		
AOSV-12555	9.3	12.50	5	50	1120	1010	980	945	930	900	880	845	812	745	685	635	600	505	390	248	165	112M-0	

Model	kW	HP	Stage	Pipe Size	Head in		Discharge in LPM																
					mtrs	feet	40	45	50	55	60	65	70	75	80	85	90	95	100	105	110	115	120
AOSV-12566	9.3	12.50	6	65	920	900	876	822	800	780	745	700	670	635	600	550	490	370	300	265	180	130M-0	

Model	kW	HP	Stage	Pipe Size	Head in		Discharge in LPM																
					mtrs	feet	10	20	30	40	50	60	70	80	90	100	110	120	130	140	150	160	170
AOSV-12585	9.3	12.50	6	50	745	722	690	620	560	510	450	420	380	350	335	320	260	200	155	165M-0			

**Performance Chart**

Model	kW	HP	Stage	Pipe Size	Head In		10	20	30	40	50	60	70	80	90	100	110	120	130	140	150	160	170	180
					mts	feet																		
AOS V-15038	11.00	15.00	3	80			32	65	98	131	164	197	229	262	295	328	361	394	427	459	492	525	558	591
AOS V-15046	11.00	15.00	4	65			1380	1220	1000	970	920	710	420	78M-0										
AOS V-15056	11.00	15.00	5	65	Discharge in LPM		1260	1150	1050	1000	900	800	700	620	400	210	105M-0							
AOS V-15066	11.00	15.00	6	65			1250	1150	1000	900	820	750	650	570	500	400	260	115M-0						
AOS V-15085	11.00	15.00	8	50			1260	1210	1150	1000	900	800	715	600	500	450	400	340	270	130M-0	250	200	165M-0	

Model	kW	HP	Stage	Pipe Size	Head In		40	45	50	55	60	65	70	75	80	85	90	95	100	110	120	140	180	280
					mts	feet																		
AOS V-20038	15.00	20.00	3	80			131	147	164	180	197	213	229	246	262	279	295	312	328	361	394	459	591	919
AOS V-20048	15.00	20.00	4	80			1590	1380	1250	1190	980	800	74M-0											
AOS V-20056	15.00	20.00	5	65	Discharge in LPM		1350	1250	1220	1150	1000	950	900	850	800	700	600	400	106M-0					
AOS V-20066	15.00	20.00	6	65			1350	1270	1200	1100	1300	1250	1110	900	870	800	750	700	600	400	125M-0			
AOS V-20085	15.00	20.00	8	50			1100	1050	900	850	810	780	750	730	710	690	670	625	600	550	500	450	135M-0	

Model	kW	HP	Stage	Pipe Size	Head In		120	130	140	150	160	170	180	190	280M-0
					mts	feet									
AOS V-200105	15.00	20.00	10	50			394	427	459	492	525	558	591	624	
AOS V-200125	15.00	20.00	12	50	Discharge in LPM		630	500	480	430	400	350	300	220M-0	
							470	440	400	350	280	200	250		







### Technical Specification

Power Range	: 0.37 kW - 1.1 kW
Speed	: 2880 rpm
Head	: Upto 80 m
Flow	: Upto 120 lpm
Voltage Range	: 160 - 240 V 1Ph, 50 Hz
Liquid / Opr.Temp	: Clear Water / 33°C
Motor Detail	: Wet Type, Cat - B, Duty - S1

## Features

- Floating Impeller for better efficiency
- Special Design for wide voltage Operation
- Stainless Steel Motor Body
- Corrosion Resistant Motor & Pump Body
- Special Design for wide voltage Operation
- High Operating Efficiency

## Applications



## Performance Chart

**Del. Size : 32 mm**

Pump Model	Stage	Motor Power		Discharge							
		kW	HP	lpm	0	15.0	24.0	33.0	36.0	42.0	48.0
				lph	0	900	1440	1980	2160	2520	2880
AMSP 05	6	0.37	0.5	<b>Head in m</b>	46	40	35	30	28	24	20

**Del. Size : 32 mm**

Pump Model	Stage	Motor Power		Discharge							
		kW	HP	lpm	0	30	45	60	75	90	105
				lph	0	1800	2700	3600	4500	5400	6300
AMSP 10	8	0.75	1.0	<b>Head in m</b>	65	53	45	32	18	10	8
AMSP 15	10	1.1	1.5	<b>Head in m</b>	80	68	60	42	30	22	15



## Technical Specification

Nominal Diameter	: 3"
Power Range	: 0.37 kW - 1.1 kW
Max. Outer Diameter	: 74 mm
Speed	: 2880 rpm
Head	: Upto 98 m
Flow	: Upto 120 lpm
Voltage Range	: 160 - 240 V 1Ph, 50 Hz
Liquid / Opr.Temp	: Clear Water / 33°C
Motor Detail	: Wet Type, Cat - B, Duty - S1

## Features

- Floating Impeller for better efficiency
- Special Design for wide voltage Operation
- Stainless Steel Motor Body
- Corrosion Resistant Motor & Pump Body
- Special Design for wide voltage Operation
- High Operating Efficiency

## Applications



Residential



Garden



Industries



Sprinklar



Water Supply



Irrigation

## Performance Chart

Pump Model	Stage	kW	HP	Del. Size (mm)	Discharge									
					lpm	10	20	30	40	50	60	70	80	90
						lph	600	1200	1800	2400	3000	3600	4200	4800
AS3 - 0715	15	0.55	0.75	25	Head in m	59	54	47	39	30	21	12		
AS3 - 1010	10	0.75	1.00	32				42	40	36	32	27	22	16
AS3 - 1012	12	0.75	1.00	32		44	42	40	36	32	26	19		
AS3 - 1012	12	0.75	1.00	32			47	44	40	35	28	21	13	
AS3 - 1020	20	0.75	1.00	25		78	72	63	52	40	28	16		



IS:8034  
CML:6500028109

### Technical Specification

Nominal Diameter	: 4"
Power Range	: 0.37 kW - 3.7 kW
Max. Outer Diameter	: 98 mm
Speed	: 2880 rpm
Head	: Upto 420 m
Flow	: Upto 500 lpm
Voltage Range	: 160 - 240 V 1Ph, 50 Hz 380 - 415 V 3Ph, 50 Hz
Liquid / Opr.Temp	: Clear Water / 33°C
Motor Detail	: Wet Type, Cat - B, Duty - S1

## Features

- Floating Impeller for better efficiency
- Special Design for wide voltage Operation
- Stainless Steel Motor Body
- Corrosion Resistant Motor & Pump Body
- Special Design for wide voltage Operation
- High Operating Efficiency

## Applications



Residential



Garden



Industries



Sprinklar



Water Supply



Irrigation

## 4" Submersible Pumps ( Smart Series )

Model	kW	HP	Stage	Pipe Size	lpm	0	15.0	24.0	33.0	36.0	42.0	48.0
						m <sup>3</sup> /h	0	900	1440	1980	2160	2520
AS4SMT H1 0506	0.37	0.5	6	32	Head in mts	46	40	35	30	28	24	20
AS4SMT H1 0708	0.55	0.75	8	32		56	50	45	40	35	30	25
AS4SMT H1 1010	0.75	1.00	10	32		75	65	58	50	45	35	30
AS4SMT H1 1012	0.75	1.00	12	32		88	78	70	60	52	45	35
AS4SMT H1 1013	0.75	1.00	13	32		105	90	85	75	70	60	40
AS4SMT H1 1016	0.75	1.00	16	32		115	100	85	75	70	60	42
AS4SMT H1 1520	1.10	1.50	20	32		140	120	100	85	80	60	45

Model	kW	HP	Stage	Pipe Size	lpm	0	30	45	60	75	90	105
						m <sup>3</sup> /h	0	1800	2700	3600	4500	5400
AS4SMT H3 1007	0.75	1.00	7	32	Head in mts	56	45	37	28	15	8	6
AS4SMT H31008	0.75	1.00	8	32		65	53	45	32	18	10	8
AS4SMT H3 1009	0.75	1.00	9	32		73	61	52	38	23	16	12
AS4SMT H3 1010	0.75	1.00	10	32		80	68	60	42	30	22	15
AS4SMT H3 1515	1.10	1.50	15	32		120	100	90	75	50	25	18

### 4" Submersible Pumps ( Smart Series ) - Performance Chart

Model	kW	HP	Stage	Pipe Size	lpm m <sup>3</sup> /h	0	30	45	60	75	90	105
						0	1800	2700	3600	4500	5400	6300
AS4SMT L4 1008	0.75	1.00	8	32	Head in mts	44	40	36	34	22	15	
AS4SMT L4 1010	0.75	1.00	10	32		56	50	46	42	30	20	18
AS4SMT L4 1515	1.10	1.50	15	32		77	66	63	62	52	38	30

Model	kW	HP	Stage	Pipe Size	lpm m <sup>3</sup> /h	0	30	60	75	90	120	150
						0	1800	3600	4500	5400	7200	9000
AS4SMT L5 1008	0.75	1.00	8	40	Head in mts	45	41	35	32	28	20	12
AS4SMT L5 1510	1.10	1.50	10	40		54	48	44	42	36	26	14

### 4" Submersible Pumps ( Standard ) - Performance Chart

Model	kW	HP	Stage	Pipe Size	lpm m <sup>3</sup> /h	0	10	14	18	32	36	42
						0	600	840	1080	1920	2160	2520
AS41AC1 0508	0.37	0.50	8	32	Head in mts	44	42	40	38	32	24	18
AS41AC1 0710	0.55	0.75	10	32		54	51	48	46	40	32	25
AS41AC1 1012	0.75	1.00	12	32		62	60	57	55	48	40	33
AS41AC1 1015	0.75	1.00	15	32		78	72	68	64	60	50	41
AS41AC1 1518	1.10	1.50	18	32		93	85	80	76	72	60	49
AS41AC1 2020	1.50	2.00	20	32		102	95	90	85	80	68	58
AS42CC1 2025	1.50	2.00	25	32		127	118	112	106	100	84	69
AS42CC1 2030	1.50	2.00	30	32		153	144	136	128	120	102	82

Model	kW	HP	Stage	Pipe Size	lpm m <sup>3</sup> /h	0	20	30	40	50	60	66
						0	1200	1800	2400	3000	3600	3960
AS41AC2 0508	0.37	0.50	8	32	Head in mts	43	38	36	30	20	15	
AS41AC2 0710	0.55	0.75	10	32		54	46	42	34	24	18	
AS41AC2 1012	0.75	1.00	12	32		62	56	52	45	36	20	14
AS41AC2 1015	0.75	1.00	15	32		78	70	65	56	42	22	16
AS41AC2 1518	1.10	1.50	18	32		94	86	74	64	46	26	18
AS41AC2 1520	1.10	1.50	20	32		104	96	84	72	52	34	20
AS42CC2 2025	1.50	2.00	25	32		128	114	103	94	78	56	38
AS42CC2 2030	1.50	2.00	30	32		154	138	126	120	104	82	64

Model	kW	HP	Stage	Pipe Size	lpm m <sup>3</sup> /h	0	30	45	60	75	90	105
						0	1800	2700	3600	4500	5400	6300
AS41AC4 0505	0.37	0.50	5	32	Head in mts	28	25	23	21	17	10	
AS41AC4 1008	0.75	1.00	8	32		44	40	36	34	22	15	
AS41AC4 1010	0.75	1.00	10	32		56	50	46	42	30	20	18
AS41AC4 1515	1.10	1.50	15	32		77	66	63	62	52	38	30
AS42CC4 2018	1.50	2.00	18	32		95	86	80	75	62	48	40
AS42CC4 2020	1.50	2.00	20	32		106	94	90	84	70	52	42
AS42CC4 3025 T	2.20	3.00	25	32		129	115	110	104	98	80	65



## 4" Submersible Pumps ( Standard ) - Performance Chart

Model	kW	HP	Stage	Pipe Size	lpm m <sup>3</sup> /h	0	30	60	75	90	120	150
						0	1800	3600	4500	5400	7200	9000
AS41AC5 1008	0.75	1.00	8	40	Head in mts	45	41	35	32	28	20	12
AS41AC5 1510	1.10	1.50	10	40		54	48	44	42	36	26	14
AS42CC5 2015	1.50	2.00	15	40		84	76	66	62	60	35	15
AS42CC5 3020 T	2.20	3.00	20	40		112	98	94	85	82	70	52

Model	kW	HP	Stage	Pipe Size	lpm m <sup>3</sup> /h	0	30	60	90	120	150	180
						0	1800	3600	5400	7200	9000	10800
AS41AC7 1006	0.75	1.00	6	50	Head in mts	34	30	28	26	20	14	10
AS41AC7 1507	1.10	1.50	7	50		42	38	36	32	24	18	12
AS41AC7 1508	1.10	1.50	8	50		45	42	38	34	28	21	14
AS42CC7 2012	1.50	2.00	12	50		76	68	62	54	46	38	20
AS42CC7 2014	2.20	3.00	14	50		88	80	72	66	54	42	30
AS42CC7 3015 T	2.20	3.00	15	50		94	85	78	72	60	48	35

Model	kW	HP	Stage	Pipe Size	lpm m <sup>3</sup> /h	0	80	110	150	200	240	280
						192	4800	6600	9000	12000	14400	16800
AS41AC10 1005	0.75	1.00	5	50	Head in mts	26	22	18	16	12	9	6
AS41AC10 1507	1.10	1.50	7	50		43	35	30	20	16	10	6
AS42CC10 2010	1.50	2.00	10	50		62	48	40	30	20	14	8
AS42CC10 3015 T	2.20	3.00	15	50		92	75	65	50	35	20	5

Model	kW	HP	Stage	Pipe Size	lpm m <sup>3</sup> /h	0	100	180	280	320	360	400
						0	6000	10800	16800	19200	21600	24000
AS42CC18 2007	1.50	2.00	7	50	Head in mts	36	31	26	21	16	9	6
AS42CC18 3008 T	2.20	3.00	8	50		42	36	32	22	18	10	7
AS42CC18 3009 T	2.20	3.00	9	50		47	40	36	26	20	11	9
AS42CC18 3010 T	2.20	3.00	10	50		51	46	36	30	22	12	10
AS42CC18 3012 T	2.20	3.00	12	50		56	52	40	32	23	14	12

Model	kW	HP	Stage	Pipe Size	lpm m <sup>3</sup> /h	0	15.0	24.0	33.0	36.0	42.0	48.0
						0	900	1440	1980	2160	2520	2880
AS41AR1 0506	0.37	0.50	6	32	Head in mts	46	40	35	30	28	24	20
AS41AR1 0708	0.55	0.75	8	32		56	50	45	40	35	30	25
AS41AR1 1010	0.75	1.00	10	32		75	65	58	50	45	35	30
AS41AR1 1012	0.75	1.00	12	32		88	78	70	60	52	45	35
AS41AR1 1013	0.75	1.00	13	32		105	90	85	75	70	60	40
AS41AR1 1016	0.75	1.00	16	32		115	100	85	75	70	60	42
AS41AR1 1520	1.10	1.50	20	32		140	120	100	85	80	60	45
AS42CR1 2025	1.50	2.00	25	32		185	170	150	130	120	105	90
AS42CR1 2030	1.50	2.00	30	32		214	200	180	155	140	122	85
AS42CR1 3045 T	2.20	3.00	45	32		319	288	250	190	160	130	90
AS42CR1 5050 T	3.70	5.00	50	32		350	300	270	250	195	175	150

## 4" Submersible Pumps ( Standard ) - Performance Chart

Model	kW	HP	Stage	Pipe Size	lpm	0	30	45	60	75	90	105
						0	1800	2700	3600	4500	5400	6300
AS41AR3 0506	0.37	0.50	6	32	Head in mts	48	27	29	24	12	6	4
AS41AR3 1007	0.75	1.00	7	32		56	45	37	28	15	8	6
AS41AR3 1008	0.75	1.00	8	32		65	53	45	32	18	10	8
AS41AR3 1009	0.75	1.00	9	32		73	61	52	38	23	16	12
AS41AR3 1010	0.75	1.00	10	32		80	68	60	42	30	22	15
AS41AR3 1515	1.10	1.50	15	32		120	100	90	75	50	25	18
AS42CR3 2020	1.50	2.00	20	32		163	140	130	105	80	50	20
AS42CR3 2025	1.50	2.00	25	32		200	170	145	120	85	50	22
AS42CR3 3030 T	2.20	3.00	30	32		240	225	180	150	110	70	30
AS42CR3 3035 T	2.20	3.00	35	32		280	245	210	170	122	75	40
AS42CR3 5040 T	3.70	5.00	40	32		330	290	245	230	160	90	50

Model	kW	HP	Stage	Pipe Size	lpm	0	30	60	90	120	145	160
						0	1800	3600	5400	7200	8700	9600
AS42AR5 1510	1.10	1.50	10	50	Head in mts	75	66	58	51	26	15	6
AS42CR5 2014	1.50	2.00	14	50		105	100	90	80	40	20	10
AS42CR5 3015 T	2.20	3.00	15	50		115	108	95	80	50	25	16
AS42CR5 3020 T	2.20	3.00	20	50		150	135	120	90	60	40	20
AS42CR5 5035 T	3.70	5.00	35	50		265	210	185	130	75	50	30

Model	kW	HP	Stage	Pipe Size	lpm	0	60	80	100	120	150	180
						0	3600	4800	6000	7200	9000	10800
AS42CR7 5025 T	3.70	5.00	25	50	Head in mts	190	180	160	135	110	60	20



## 6" Submersible Pumps - Performance Chart

MODEL	kW/HP	STAGE	DEL. SIZE	CONN	LPH		HEAD IN mts												
					LPH	LPM	5000	5500	6000	6500	7000	7500	8000	8000	9000	10000	11000	12000	13000
AS62CR 5012	3.70/5.00	12	50	DOL	83	92	100	102	105	108	117	125	133	150	167	183	200	217	
AS62CR 6015	4.50/6.00	15	50	DOL	144	141	138	137	128	116	112	105	93	84	76				
AS62CR 7518	5.50/7.50	18	50	DOL	167	164	161	156	153	149	142	126	123						
AS62CR 7520	5.50/7.50	20	50	DOL	183	179	174	172	168	164	160	142	138						
AS62CR 1025	7.50/10.00	25	50	SD	238	230	224	218	210	189	184	177	163						

MODEL	kW/HP	STAGE	DEL. SIZE	CONN	LPH		HEAD IN mts												
					LPH	LPM	5000	5500	6000	7000	8000	9000	10000	11000	12000	13000	14000	15000	
AS62CR 3006	2.20/3.00	6	50	DOL	83	92	100	117	133	150	167	183	200	217	233	250			
AS62CR 5010	3.70/5.00	10	50	DOL	87	85	84	81	79	75	74	70	63	60					
AS62CR 6012	4.50/6.00	12	50	DOL	112	110	108	107	104	102	96	84	82	77					
AS62CR 7514	5.50/7.50	14	50	DOL	129	126	123	119	116	111	108	98	96	92					
AS62CR 7515	5.50/7.50	15	50	DOL	135	132	129	128	125	119	115	105	98	95					
AS62CR 1018	7.50/10.00	18	50	SD	175	173	171	168	164	157	150	126	119	112					
AS62CR 1020	7.50/10.00	20	50	SD	186	184	182	176	173	164	158	143	137	125					

MODEL	kW/HP	STAGE	DEL. SIZE	CONN	LPH		HEAD IN mts												
					LPH	LPM	7500	9000	11000	12000	13000	14000	15000	16000	17000	18000	19000	20000	
AS62CR 3005	2.20/3.00	5	50	DOL	125	150	183	200	217	233	250	267	283	300	317	333	23	26	
AS62CR 5008	3.70/5.00	8	50	DOL	75	71	70	67	64	62	56	52	48	45	38	33	33	33	
AS62CR 6010	4.50/6.00	10	50	DOL	95	94	87	81	76	72	70	66	54	48	41	36	36	36	
AS62CR 7512	5.50/7.50	12	50	DOL	107	99	95	89	86	87	84	79	69	59	52	42	42	42	
AS62CR 1016	7.50/10.00	16	50	SD	154	148	144	138	131	125	112	105	91	78	70	62	62	62	



## 6" Submersible Pumps - Performance Chart

MODEL	kW/HP	STAGE	DEL. SIZE	CONN	LPH		3840	5400	7920	10080	11400	11900	14520	16000	20900	22800	24000
					LPM	HEAD IN mts											
AS62CR 6008	4.50/6.00	8	50	DOL	64	79	64	90	132	168	190	198	242	267	348	380	400
AS62CR 7510	5.50/7.50	10	50	DOL				97	94	88	84	80	71	66			
AS62CR 1014	7.50/10.00	14	50	SD				135	129	125	120	116	98	92			

MODEL	kW/HP	STAGE	DEL. SIZE	CONN	LPH		3840	4800	8200	9400	11000	13800	16500	18000	20900	22800	24000
					LPM	HEAD IN mts											
AS62CR 3004	2.20/3.00	4	50	DOL	64		64	80	137	157	183	230	275	300	348	380	400
AS62CR 5006	3.70/5.00	6	50	DOL				58	55	54	52	49	46	42	37		
AS62CR 6007	4.50/6.00	7	50	DOL		68		66	64	62	59	56	53	49	45		
AS62CR 7508	5.50/7.50	8	50	DOL		78		76	72	71	67	64	60	56	49		
AS62CR 1012	7.50/10.00	12	50	SD		118		115	113	110	106	103	91	84	82		

MODEL	kW/HP	STAGE	DEL. SIZE	CONN	LPH		3840	5400	7920	10080	11400	11900	14520	16000	21600	22800	24000
					LPM	HEAD IN mts											
AS62CR 3003	2.20/3.00	3	50	DOL	64		64	90	132	168	190	198	242	267	360	380	400
AS62CR 5005	3.70/5.00	5	50	DOL		54		53	52	51	49	47	45	42	35	32	29
AS62CR 6006	4.50/6.00	6	50	DOL		60		58	57	55	52	49	47	45	43	41	36
AS62CR 7507	5.50/7.50	7	50	DOL		68		67	65	63	60	59	56	53	49	46	42
AS62CR 1010	7.50/10.00	10	50	SD		105		102	100	98	94	86	78	75	70	38	22

MODEL	kW/HP	STAGE	PIPE SIZE	CONN	LPH		2000	3100	6300	11000	15300	18000	20000	25200	30000	31500	34200	36000
					LPM	HEAD IN mts												
AS62CM 3003	2.20/3.00	3	65	DOL	33	29	33	52	105	183	255	300	333	420	500	525	570	600
AS62CM 3004	2.20/3.00	4	65	DOL		36		35	34	30	28	26	23	21	13	11		
AS62CM 5005	3.70/5.00	5	65	DOL		48		47	45	41	38	34	33	30				
AS62CM 6006	4.50/6.00	6	65	DOL		58		57	53	48	44	39	37	35				
AS62CM 7507	5.50/7.50	7	65	DOL		66		64	61	57	53	47	45	40				
AS62CM 1010	7.50/10.00	10	65	SD		95		92	88	81	72	66	58	52				

## 6" Submersible Pumps - Performance Chart

MODEL	kW/HP	STAGE	DEL. SIZE	CONN	LPH		2000	3100	6300	11000	15300	18000	20000	25200	30000	31500	34200	36000
					LPM	HEAD IN mts	33	52	105	183	255	300	333	420	500	525	570	600
AS62CM 3002	2.20/3.00	2	65	DOL			19	18	17	16	15	14	13	12	11	10		
AS62CM 5004	3.70/5.00	4	65	DOL			39	38	37	35	32	31	28	26	18	16	13	11
AS62CM 6005	4.50/6.00	5	65	DOL			49	47	46	43	40	36	35	33	24	19	15	11
AS62CM 7506	5.50/7.50	6	65	DOL			60	59	58	54	52	49	45	41	31	30	23	20
AS62CM 1008	7.50/10.00	8	65	SD			78	77	75	72	68	64	61	52	44	42	39	37

MODEL	kW/HP	STAGE	DEL. SIZE	CONN	LPH		2000	3100	6300	11000	15300	18000	20000	25500	30000	31500	34200	36000
					LPM	HEAD IN mts	33	52	105	183	255	300	333	425	500	525	570	600
AS62CM 5003	3.70/5.00	3	80	DOL			28	27	26	25	24	23	22	20	17	16	15	12
AS62CM 6004	4.50/6.00	4	80	DOL			37	36	35	33	31	30	28	26	21	20	17	15
AS62CM 7505	5.50/7.50	5	80	DOL			48	47	45	44	42	38	36	33	28	25	21	17

MODEL	kW/HP	STAGE	DEL. SIZE	CONN	LPH		24000	28000	32000	36000	40000	44000	48000	52800	56000	60000	62000	64000
					LPM	HEAD IN mts	400	467	533	600	667	733	800	880	933	1000	1033.3	1067
AS62CM 5003	3.70/5.00	3	80	DOL			28	27	26	25	24	23	22	20				
AS62CM 7504	5.50/7.50	4	80	DOL			38	37	36	34	32	30	28	26	24	21		



### Technical Specification

Nominal Diameter	: 6"
Power Range	: 2.2 kW - 11 kW
Max. Outer Diameter	: 147 mm
Speed	: 2880 rpm
Head	: Upto 350 m
Flow	: Upto 1000 lpm
Voltage Range	: 380 - 415 V 3Ph, 50 Hz
Starting Type	: DOL & S.D
Liquid / Opr.Temp	: Clear Water / 33°C
Motor Detail	: Wet Type, Cat - B, Duty - S1

## Features

- High Discharge
- Dynamically Balanced Rotating Parts
- High Operating Efficiency
- Water lubricated bearings
- Special Design for wide voltage Operation
- Additional Bearings Support for Higher Stage Pumps

## Applications



High rise  
Buildings



Garden



Industries



Sprinklar



Water Supply



Irrigation

## Performance Chart

Del. Size : 50 mm

Pump Model	Stage	Motor Power		Flow in lpm / lph							
		HP	kW	lpm	40	70	90	110	130	150	180
				lph	2400	4200	5400	6600	7800	9000	10800
AS6CRS65/11/6	6	3.0	2.2	Head in m	85	83	81	77	69	57	37
AS6CRS65/11/10	10	5.0	3.7		142	138	135	128	115	95	61
AS6CRS65/11/12	12	6.0	4.5		170	166	162	154	138	114	73
AS6CRS65/11/15	15	7.5	5.5		213	207	203	192	173	143	92
AS6CRS65/11/20	20	10.0	7.5		284	276	270	256	230	190	122
AS6CRS65/11/24	24	12.5	9.3		341	331	324	307	276	228	146
AS6CRS65/11/30	30	15.0	11.0		426	414	405	384	345	285	183

## 6" Submersible Pumps - Performance Chart

Del. Size : 50 mm

Pump Model	Stage	Motor Power		Flow in lpm / lph							
		HP	kW	lpm	75	100	125	150	175	200	225
				lph	4500	6000	7500	9000	10500	12000	13500
AS6CRS66/15/5	5	3.0	2.2	Head in m	75	72	67	60	53	45	37
AS6CRS66/15/8	8	5.0	3.7		120	115	106	96	84	72	59
AS6CRS66/15/10	10	6.0	4.5		150	144	133	120	105	90	74
AS6CRS66/15/12	12	7.5	5.5		180	173	160	144	126	108	89
AS6CRS66/15/16	16	10.0	7.5		240	230	213	192	168	144	118
AS6CRS66/15/20	20	12.5	9.3		300	288	266	240	210	180	148
AS6CRS66/15/24	24	15.0	11.0		360	346	319	288	252	216	178

Del. Size : 50 mm

Pump Model	Stage	Motor Power		Flow in lpm / lph							
		HP	kW	lpm	110	160	180	200	220	240	290
				lph	6600	9600	10800	12000	13200	14400	17400
AS6CRS68/20/4	4	3.0	2.2	Head in m	60	56	52	48	44	39	24
AS6CRS68/20/6	6	5.0	3.7		90	83	79	73	66	59	37
AS6CRS68/20/8	8	6.0	4.5		120	111	105	97	88	78	49
AS6CRS68/20/10	10	7.5	5.5		150	139	131	121	110	98	61
AS6CRS68/20/12	12	10.0	7.5		180	167	157	145	132	118	73
AS6CRS68/20/15	15	12.5	9.3		225	209	197	182	165	147	92
AS6CRS68/20/18	18	15.0	11.0		270	250	236	218	198	176	110
AS6CRS68/20/21	21	17.5	13.0		315	292	275	254	231	206	128
AS6CRS68/20/24	24	20.0	15.0		360	334	314	290	264	235	146

Del. Size : 65mm

Pump Model	Stage	Motor Power		Flow in lpm / lph							
		HP	kW	lpm	100	150	200	250	300	350	400
				lph	6000	9000	12000	15000	18000	21000	
AS6CRS610/25/3	3	3.0	2.2	Head in m	45	44	41	36	30	23	15
AS6CRS610/25/5	5	5.0	3.7		75	73	68	60	50	39	25
AS6CRS610/25/6	6	6.0	4.5		90	87	81	72	60	46	30
AS6CRS610/25/8	8	7.5	5.5		120	116	108	96	80	62	40
AS6CRS610/25/10	10	10.0	7.5		150	145	135	120	100	77	50
AS6CRS610/25/12	12	12.5	9.3		180	174	162	144	120	92	60
AS6CRS610/25/15	15	15.0	11.0		225	218	203	180	150	116	75
AS6CRS610/25/18	18	17.5	13.0		270	261	243	216	180	139	90
AS6CRS610/25/20	20	20.0	15.0		300	290	270	240	200	154	100
AS6CRS610/25/25	25	25.0	18.5		375	363	338	300	250	193	125
AS6CRS610/25/30	30	30.0	22.0		450	435	405	360	300	231	150

Del. Size : 65mm

Pump Model	Stage	Motor Power		Flow in lpm / lph							
		HP	kW	lpm	200	260	300	340	380	420	480
				lph	12000	15600	18000	20400	22800	25200	28800
AS6CRS612/34/4	4	5.0	3.7	Head in m	59	56	53	49	44	38	28
AS6CRS612/34/5	5	6.0	4.5		74	70	67	61	55	48	35
AS6CRS612/34/6	6	7.5	5.5		88	84	80	73	66	57	42
AS6CRS612/34/8	8	10.0	7.5		118	112	106	98	88	76	56
AS6CRS612/34/10	10	12.5	9.3		147	140	133	122	110	95	70
AS6CRS612/34/12	12	15.0	11.0		176	168	160	146	132	114	84
AS6CRS612/34/14	14	17.5	13.0		206	196	186	171	154	133	98
AS6CRS612/34/16	16	20.0	15.0		235	224	213	195	176	152	112
AS6CRS612/34/20	20	25.0	18.5		294	280	266	244	220	190	140
AS6CRS612/34/24	24	30.0	22.0		353	336	319	293	264	228	168



## 6" Submersible Pumps - Performance Chart

Del. Size : 65mm

Pump Model	Stage	Motor Power		Flow in lpm / lph							
		HP	kW	lpm	240	320	370	410	450	500	580
				lph	14.4	19.2	22.2	24.6	27.0	30.0	34.8
AS6CRS615/41/2	2	3.0	2.2	Head in m	30	28	26	24	21	17	10
AS6CRS615/41/3	3	5.0	3.7		45	42	39	35	32	26	15
AS6CRS615/41/4	4	6.0	4.5		60	56	52	47	42	34	20
AS6CRS615/41/5	5	7.5	5.5		75	70	65	59	53	43	25
AS6CRS615/41/7	7	10.0	7.5		105	98	90	83	74	60	35
AS6CRS615/41/8	8	12.5	9.3		120	112	103	94	84	68	40
AS6CRS615/41/10	10	15.0	11.0		150	140	129	118	105	85	50
AS6CRS615/41/12	12	17.5	13.0		180	168	155	142	126	102	60
AS6CRS615/41/13	13	20.0	15.0		195	182	168	153	137	111	65
AS6CRS615/41/17	17	25.0	18.5		255	238	219	201	179	145	85
AS6CRS615/41/20	20	30.0	22.0		300	280	258	236	210	170	100

Del. Size : 65mm

Pump Model	Stage	Motor Power		Flow in lpm / lph							
		HP	kW	lpm	230	330	400	500	600	670	770
				lph	13800	19800	24000	30000	36000	40200	46200
AS6CRS620/50/3	3	6.0	4.5	Head in m	44	42	39	34	28	23	15
AS6CRS620/50/4	4	7.5	5.5		59	56	52	46	37	31	20
AS6CRS620/50/5	5	10.0	7.5		74	70	65	57	47	39	25
AS6CRS620/50/6	6	12.5	9.3		89	83	78	68	56	46	29
AS6CRS620/50/7	7	15.0	11.0		118	111	104	91	74	62	39
AS6CRS620/50/9	9	17.5	13.0		133	125	117	103	84	69	44
AS6CRS620/50/10	10	20.0	15.0		148	139	130	114	93	77	49
AS6CRS620/50/12	12	25.0	18.5		178	167	156	137	112	92	59
AS6CRS620/50/15	15	30.0	22.0		222	209	195	171	140	116	74

Del. Size : 65mm

Pump Model	Stage	Motor Power		Flow in lpm / lph							
		HP	kW	lpm	320	380	460	550	640	720	780.0
				lph	19.2	22.8	27.6	33.0	38.4	43.2	46800
AS6CRS625/55/3	3	7.5	5.5	Head in m	46	44	41	36	29	22	15
AS6CRS625/55/4	4	10.0	7.5		61	59	55	48	39	29	20
AS6CRS625/55/5	5	12.5	9.3		76	74	69	60	49	36	25
AS6CRS625/55/6	6	15.0	11.0		91	89	83	72	58	43	30
AS6CRS625/55/8	8	20.0	15.0		122	118	110	96	78	58	40
AS6CRS625/55/9	9	25.0	18.5		137	133	124	108	87	65	45
AS6CRS625/55/10	10	25.0	18.5		152	148	138	120	97	72	50
AS6CRS625/55/12	12	30.0	22.0		182	178	166	144	116	86	60



## Technical Specification

Power Range	: 0.75 kW - 1.5 kW
Speed	: 2880 rpm
Head	: Upto 30 m
Flow	: Upto 29 m <sup>3</sup> / hr
Voltage Range	: 220 - 240 V 1Ph, 50 Hz
Degree of Protection	: IP X8
Insulation	: Class B / F 99.9% Pure Copper
Duty	: S1 Continuous Duty
Max. Immersion Depth	: 5 m
Sealing	: Mechanical Seal
Impeller Type	: Closed, Vortex & Cutter
Max. Ambient Temp.	: 40 °C
Delivery Size	: 1" & 2"
Solid Handling Capacity	: Upto 10 mm

## Features

- Inbuilt with TOP
- Stainless Steel Motor Body
- Non Clogging Impellers
- Automatic On / Off Operation

## Applications



Pumping Waste Water From Industries



Drainage application & Flood Control



Pumping Waste Water From Villas & Municipal



Commercial Buildings

## Performance Chart

Pump Model	Motor Power		Outlet Size (mm)	Flow								Solid Handling Capacity (mm)	Weight (Kg)
	kW	HP		lps	0	0.7	1	1.5	1.8	2	1		
ADWP10	0.75	1.00	1"	Head in m	30	26	22	18	14	10	2.5	5	23.5

Pump Model	Motor Power		Outlet Size (mm)	Flow								Solid Handling Capacity (mm)	Weight (Kg)
	kW	HP		m <sup>3</sup> /hr	0	5	10	15	20	25	30		
ADWP10-C	0.75	1.00	1"	Head in m	14.0	11.7	9.3	7.0	5.4			10	17.5
ADWP15-C	1.10	1.50	2"		13	12	11.0	9	7	5.6 (22)		10	19
ADWP20-C	1.50	2.00	2"		15	14	13.0	12	9.5	7	5(28)	10	22

Pump Model	Motor Power		Outlet Size (mm)	Flow								Solid Handling Capacity (mm)	Weight (Kg)
	kW	HP		m <sup>3</sup> /hr	0	5	10	15	20	25	30		
ADWP10-V	1.10	1.00	2"	Head in m	9.8	9.0	8.0	6.8	5.4	4.7 (22)		10	23.5
ADWP15-V	1.50	2.00	2"		15	14	12.7	11	10	8.0	6 (29)	10	27



## Features

- Constant Pressure at all the water outlets
- Inbuilt with TOP
- Energy Saving
- Automatic pump ON / OFF based on water Requirements
- Quiet Operation

## Technical Specification

Power Range	: 0.37 kW - 0.75 kW
Max. Pressure	: 5 bar
Flow	: Upto 6.2 m <sup>3</sup> / hr
Voltage Range	: 160 - 240 V 1Ph, 50 Hz
Liquid Temp Max.	: 33°C / 90°C *
Duty	: S1 Continuous Duty
Insulation	: Class B, 99.9% Pure Copper

\* Applicable for High temperature models

## Applications



Residential



Industries



Hospital



Buildings



Villas



Booster

## Performance Chart

Single Phase 220 - 240 Volts 50 Hz

Model	Power (kW/HP)	Stages	Flow in m <sup>3</sup> /hr	0	1	2	3	4	5	6	7	*No. of Bathrooms	*No. of Taps	Tank Capacity
				0	0.28	0.56	0.83	1.11	1.39	1.67	1.94			
APBS05-3	0.37/0.5	3	Head in m	30	27	23	18	13	8			1	3	24 ltrs
APBS07-4	0.55/0.75	4		40	37	33	28	22	14	8		2-3	8	24 ltrs
APBS10-5	0.75/1.00	5		50	46	41	35	27	18	10	8(6.2)	4-5	15	24 ltrs

★ Approx. Recommendation # 60 liters tank available on request



**Features**

- Constant Pressure at all the water outlets
- Inbuilt with TOP • Energy Saving
- Automatic pump ON / OFF based on water Requirements
- Quiet Operation

**Technical Specification**

Power Range	: 0.37 kW - 0.75 kW
Max. Pressure	: 5 bar
Flow	: Upto 6.2 m <sup>3</sup> / hr
Voltage Range	: 160 - 240 V 1Ph, 50 Hz
Liquid Temp Max.	: 33°C / 90°C *
Duty	: S1 Continuous Duty
Insulation	: Class B, 99.9% Pure Copper

\* Applicable for High temperature models

**Applications**



**Performance Chart** ( Single Phase 220 - 240 Volts 50 Hz )

Model	Power (kW/HP)	Flow in m <sup>3</sup> /hr	0	1	2	3	4	* No. of Bathrooms	* No. of Taps	Tank Capacity
APBS0522	0.37/0.5	<b>Head in m</b>	25	20	15	10	5	1	3	1 ltr

**Automatic Pressure Controller**



**Technical Specification**

Power	: Upto 1.1kW
Voltage Range	: 220 – 240V, 50Hz, A.C
Max. Working Pressure	: 10 Bar
Degree of Protection	: IP 65
Max. Working Temp.	: 33°C

Aqualand automatic pump controller consists of electronic devices designed to start when a tap is turned on and stop when a tap is turned off. The microprocessor protects the pump from dangerous working conditions, such as dry running, and allows the pump to be restarted either automatically or manually. It also prevents the pump from starting-up too often when small leaks are present within an installation.

**Applications**





## Features

- Special duty motor suitable for compressor
- Specially designed cast iron cylinder with deep finned for better heat dissipation
- Compact Design, Easy to Operate
- Detachable compressor cylinder make cleaning easy
- Provision of fool proof indicator to check the oil level clearly whenever required
- Robust construction withstanding overload
- Available in Single and Double cylinder design

## Technical Specification

Power Range	: 0.75 kW - 7.5kW (1HP to 10HP)
Max.Total Head	: Upto 290 mts.
Max.Flow Rate	: 8200 lph (8.2 m <sup>3</sup> /hr)
Duty	: S1
Insulation	: Class "B"
Voltage Range	: 200-240V (1PH), 380-415V (3PH) A.C.Supply

## Applications



Residential



Industries



Buildings



Villas



Irrigation

## Performance Chart

MONO / BELT COMPRESSOR PUMPS - 1440 RPM AT RATED VOLTAGE 200 VOLT-240 VOLT  
SINGLE PHASE / 380-415 VOLTS THREE PHASE 50HZ.A.CSUPPLY PERFORMANCE

Model	Power Rating		Frame	Pipe Size (inch) A x W	Total Head in Meters						
	kW	HP			80	120	150	180	210	245	290
					Discharge in LPH						
AMC-10	0.75	1.00	LC	½ x 1	1050	950					
AMC-15	1.10	1.50	LC	½ x 1	1150	1050					
ABCS-10	0.75	1.00	100S	½ x 1	1200						
ABCS-15	1.10	1.50	100S	½ x 1	1800	1500					
ABCS-20	1.50	2.00	100S	½ x 1	2700	2300	2000				
ABDS-20	1.50	2.00	100L	½ x 1	2700	2300	2000				
ABDS-20 "A"	1.50	2.00	CLASS "A"	½ x 1	2700	2300	2000				





**Technical Specification**

Frame Size	: 63 to 1090M
Output Range	: 0.37kW to 1.5kW
Number of Poles	: 2/4/6
Protection	: IP 41
Voltage Range	: 350V to 415V or as required
Duty	: S1 Continuous
Frequency	: 50Hz
Cooling Type	: Surface Air and Fan cooled
Insulation	: Class 'B' & 'F'
Ambient temperature	: -10 °C to 10 °C

**Performance Chart : 3 Phase, 415V, 50Hz**

Power Rating kW / HP	No. of Poles	RPM (SYNC)	Frame Size	100 % Load			Breakaway	
				RPM	Eff. %	A	I Rated	T Rated
0.37 / 0.50	2	3000	71	2790	66.1	1.20	6.00	1.7
0.55 / 0.75	2	3000	71	2760	69.1	1.60	6.00	1.7
0.75 / 1.00	2	3000	80	2780	72.1	2.00	6.00	1.7
1.10 / 1.50	2	3000	80	2790	75.0	2.80	6.00	1.7
1.50 / 2.00	2	3000	90	2800	77.2	3.70	6.00	1.7
0.37 / 0.50	4	1500	71	1330	66.2	1.40	5.50	1.7
0.55 / 0.75	4	1500	80	1340	69.1	1.70	5.50	1.7
0.75 / 1.00	4	1500	80	1360	72.1	2.20	5.50	1.7
1.10 / 1.50	4	1500	90	1370	75.0	2.90	5.50	1.7
1.50 / 2.00	4	1500	90	1380	77.2	3.80	5.50	1.7
0.37 / 0.50	6	1000	80	870	64.0	1.40	5.50	1.6
0.55 / 0.75	6	1000	80	870	67.0	1.90	5.50	1.6
0.75 / 1.00	6	1000	80	890	70.0	2.30	5.50	1.6
1.10 / 1.50	6	1000	90	900	72.9	3.20	5.50	1.6
1.50 / 2.00	6	1000	100	900	75.2	4.00	5.50	1.6



**Technical Specification**

Power Range : 0.37 kW - 2.2 kW  
 Voltage Range : 220V , Single Phase, 50Hz, A.C  
 Type : "Capacitor Start & Run (CSR) Capacitor Start and Capacitor Run (CSCR)"  
 Degree of Protection : IP 52

**Features**

- Compact Design
- Safe and Silent Operation
- Rigid Construction

**Protections**

- Inbuilt overload Protection
- Over Voltage
- Under Voltage

**Capacitor Values**



**Openwell Submersible Pumps - Horizontal**

Sl.No	HP	Running Capacitor ( mfd )
1	0.5 HP Eco	25
2	0.5 HP	36
3	0.5 HP Smart	25
4	1 HP Smart	45
5	1 HP Eco	45
6	1 HP	50
7	2 HP - 1PHASE	80
8	2 HP - 2PHASE	36 600v
9	3 HP - 2PHASE	72 600V
10	3 HP - 1PHASE	120

**Submersible Motor - Oil Filled**

Sl.No	HP	Running Capacitor ( mfd )
1	0.5 HP	30
2	0.75 HP	30
3	1.0 HP	36
4	1.5 HP	60
5	2.0 HP	72

**Submersible Motor - Water Filled**

Sl.No	HP	Running Capacitor ( mfd )	Starting Capacitor ( mfd )
1	0.5 HP	40	100/120
2	1 HP	50	100/120
3	1.5 HP	72	100/120
4	2 HP	72	100/120
5	2 HP	120	120/150
6	2 HP	144	200/250
7	3 HP	144	200/250



### Technical Specification

Power	: 0.37 kW
Speed	: 2800 rpm
Head	: Upto 38 m
Flow	: Upto 36 lpm
Voltage Range	: 160 - 240V, 1Ph 50 Hz
Liquid / Max. Temp	: Clear Water / 33°C
Insulation	: Class F, 99.9% Pure Copper

### Features

- Inbuilt with TOP
- Compact in Size
- Designed wide voltage operation
- Easy to Install
- Brass Impeller



### Applications



Residential



Garden



Cooling System



Booster

### Performance Chart

Model	Power Rating		Pipe Size (mm)	Total Head in Meters											Shut-off Head (m)
				6	9	12	15	18	21	24	27	30	33	36	
	kW	HP		Discharge in lpm											
ELITE-NSP	0.37	0.50	25x25	30	26	23	20	17	10	7					30 m
MINI STAR-NSP	0.37	0.50	25x25	33	29	26	23	19	16	14	8	4			33 m
SPORTY-NSP	0.37	0.50	25x25	36	32	28	25	22	19	16	13	10	0	5	38 m



Technical Specification	
Power Range	: 0.75kW
Speed	: 2800 rpm
Head	: Upto 28 m
Flow	: Upto 145 lpm
Voltage Range	: 160 - 240V, 1Ph 50 Hz
Liquid / Max.Temp	: Clear Water / 33°C
Insulation	: Class F, 99.9%Pure Copper

## Features

- Inbuilt with TOP
- Study and Compact
- Silent Operation

## Applications



Residential



Garden



Cooling System

## Performance Chart

Model	kW/HP	Pipe Size (mm)	Total Head in Meters											Shut-off Head (m)
			8	10	11	12	14	16	18	20	22	24	26	
			Discharge in lpm											
ACM-1022	0.75/1.00	25 x 25	145	143	140	135	128	120	108	95	80	65	33	30
ACM-1032	0.75/1.00	32 x 25	145	143	140	135	128	120	108	95	80	65	33	28

### FOR SINGLE PHASE 3 WIRE (D.O.L) MOTOR MAXIMUM LENGTH OF COPPER CABLE

Motor Rating			Cable Size in Square Millimetres						MAXIMUM LENGTH IN METRES
VOLTS	kW	HP	1.5	2.5	4	6	10	16	
230 VOLT 50Hz	0.37	0.5	120	200	320	480	810		
	0.55	0.75	80	130	220	320	550		
	0.75	1	60	100	170	250	430		
	1.1	1.5	40	70	120	180	300		
	1.5	2	30	60	90	130	230	360	
	2.2	3		40	60	90	150	230	

### FOR THREE PHASE 6WIRE (S/D) MOTOR MAXIMUM LENGTH OF COPPER CABLE

Voltage drop - 3%

Motor Rating			Cable Size in Square Millimetres																		MAXIMUM LENGTH IN METRES		
VOLTS	kW	HP	1.5	2.5	4	6	10	16	25	35	50	70	95	120	150	185	240	300	400	500		630	
380-415 VOLT 50Hz	5.5	7.5	91	143	234	351	572	896	1377	1884													
	7.5	10	65	104	169	260	403	650	974	1338													
	9.3	12.5		91	143	221	364	572	870	1182	1624												
	11	15		78	130	182	299	481	714	974	1377	1832											
	13	17.5			104	143	260	403	611	844	1156	1533											
	15	20			91	130	221	351	533	740	1026	1364	1741										
	18.5	25				104	182	273	429	585	799	1065	1364	1624									
	22	30					156	234	364	494	688	922	1169	1403	1650								
	26	35						130	195	299	403	572	792	1000	1221	1429	1650						
	30	40						117	169	273	364	520	675	870	1013	1208	1390	1624					
	37	50							143	221	299	416	546	701	831	974	1117	1312	1494				
	45	60								182	247	338	468	598	727	870	1013	1208	1377				
	55	75									208	286	377	494	611	714	831	987	1137				
	63	85									188	260	299	442	546	637	740	870	1000				
	75	100										208	286	377	455	533	611	727	831	974			
	93	125											234	299	364	429	494	585	662	779			
	110	150												260	312	377	429	520	598	701	786		
	130	175													221	266	325	377	442	520	598	688	760
	150	200														234	279	325	390	455	539	604	669
	166	225															234	286	338	390	455	520	578
185	250																260	312	364	429	481	539	
220	300																	247	286	331	372	410	
260	350																		247	286	325	357	
300	400																			214	247	273	312

These are maximum length of cable in METRES from POWER SOURCE to MOTOR. Exceeding these length will void warranty.

**FOR THREE PHASE 3 WIRE (D.O.L.) MOTOR MAXIMUM LENGTH OF COPPER CABLE**

Voltage drop - 3%

Motor Rating			Cable Size in Square Millimetres																		MAXIMUM LENGTH IN METRES	
VOLTS	kW	HP	1.5	2.5	4	6	10	16	25	35	50	70	95	120	150	185	240	300	400	500		630
380-415 VOLT 50Hz	0.37	0.5	473	788	1260																	
	0.55	0.75	398	660	1050																	
	0.75	1	311	518	825																	
	1.1	1.5	203	338	533	795																
	1.5	2	161	270	428	638																
	2.2	3	113	188	300	450	731															
	3	4	86	143	233	345	566	885														
	3.7	5	71	120	188	285	465	735														
	4	5.5	67	113	176	263	435	683	1043													
	4.5	6	64	105	169	255	420	653	998	1358												
	5.5	7.5	53	83	135	203	330	518	795	1088												
	7.5	10	38	60	98	150	233	375	563	773												
	9.3	12.5		53	83	128	210	330	503	683	938											
	11	15		45	75	105	173	278	413	563	795	1058										
	13	17.5			60	83	150	233	353	488	668	885										
	15	20			53	75	128	203	308	428	593	788	1005									
	18.5	25				60	105	158	248	338	461	615	788	938								
	22	30					90	135	210	285	398	533	675	810	953							
	26	35					75	113	173	233	330	458	578	705	825	953						
	30	40					68	98	158	210	300	390	503	585	698	803	938					
	37	50						83	128	173	240	315	405	480	563	645	758	863				
	45	60							105	143	195	270	345	420	503	585	698	795				
	55	75								120	165	218	285	353	413	480	570	656				
	63	85								109	150	173	255	315	368	428	503	578				
	75	100									120	165	218	263	308	353	420	480	563			
	93	125										135	173	210	248	285	338	383	450			
	110	150											150	180	218	248	300	345	405	454		
	130	175												128	154	188	218	255	300	345	398	439
	150	200													135	161	188	225	263	311	349	386
	166	225														135	165	195	225	263	300	334
185	250															150	180	210	248	278	311	
220	300																143	165	191	215	237	
260	350																	143	165	188	206	
300	400																		124	143	158	180

These are maximum length of cable in METRES from POWER SOURCE to MOTOR. Exceeding these length will void warranty.



Quantity of Water		Nominal Diameter of Pipe											
Flow		1/2"	3/4"	1"	1 1/4"	1 1/2"	2"	2 1/2"	3"	3 1/2"	4"	5"	6"
lpm	lps												
10	0.2	9.91	2.407	0.784									
15	0.3	20.11	4.862	1.57	0.416								
20	0.3	33.53	8.035	2.588	0.677	0.346							
25	0.4	49.93	11.91	3.834	1.004	0.51							
30	0.5	69.34	16.5	5.277	1.379	0.700	0.223						
35	0.6	91.54	21.75	6.949	1.811	0.914	0.291						
40	0.7		27.66	8.82	2.29	1.16	0.368						
50	0.8		41.4	13.14	3.403	1.719	0.544	0.159					
60	1.0		57.74	18.28	4.718	2.375	0.751	0.218					
70	1.2		76.49	24.18	6.231	3.132	0.988	0.287	0.131				
80	1.3			30.87	7.94	3.988	1.254	0.363	0.164				
90	1.5			38.3	9.828	4.927	1.551	0.449	0.203				
100	1.7			46.49	11.9	5.972	1.875	0.542	0.244	0.124			
125	2.1			70.41	17.93	8.967	2.802	0.809	0.365	0.185	0.101		
150	2.5				25.11	12.53	3.903	1.124	0.508	0.256	0.14		
175	2.9				33.32	16.66	5.179	1.488	0.67	0.338	0.184		
200	3.3				42.75	21.36	6.624	1.901	0.855	0.431	0.234	0.084	
250	4.2				64.86	32.32	10.03	2.86	1.282	0.646	0.35	0.126	
300	5.0					45.52	14.04	4.009	1.792	0.903	0.488	0.175	0.074
400	6.7					78.17	24.04	6.828	3.053	1.53	0.829	0.294	0.124
500	8.3						36.71	10.4	4.622	2.315	1.254	0.445	0.187
600	10.0						51.84	14.62	6.505	3.261	1.757	0.623	0.26
700	11.7							19.52	8.693	4.356	2.345	0.831	0.347
800	13.3							25.20	11.18	5.582	3.009	1.066	0.445
900	15.0							31.51	13.97	6.983	3.762	1.328	0.555
1000	16.7							38.43	17.06	8.521	4.595	1.616	0.674
1250	20.8								26.1	13	7.01	2.458	1.027
1500	25.0								36.97	18.42	9.892	3.468	1.444

Head loss in metres per 100 metres of straight pipes.



  
**AQUALAND**  
अक्वालेड  
PUMPS & MOTORS



[www.pioneerpumps.in](http://www.pioneerpumps.in)

 **Pioneer Products**

No.7, Annamalai Industrial Park, Kalapatti, Coimbatore - 641 048. India  
Email : [info@pioneerpumps.in](mailto:info@pioneerpumps.in) | Web : [www.pioneerpumps.in](http://www.pioneerpumps.in)  
Mobile : 97877 22444, 73395 55333, 97894 44333

**Toll Free No : 1800 - 123 - 4733**

